

HIGH PRECISION DIGITAL INDICATORS

LINEAR BALL BEARINGS
FOR TEN MILLION TIMES USE

ABSOLUTE ENCODER, THE ORIGINAL
DATA REMAINS AFTER POWER OFF

DATA
OUTPUT

ATTENTION: RECHARGEABLE BATTERY,
FOR 24 HOURS CONTINUOUS WORKING

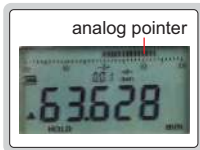
**INSPECTION
CERTIFICATE**
TRACEABLE TO NIST

7

warning when
over tolerance



analog pointer



2133-10

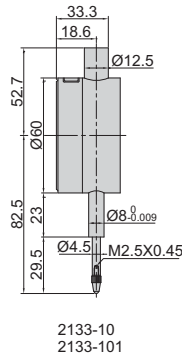


2133-25

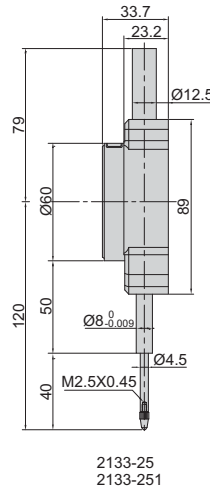


2133-501

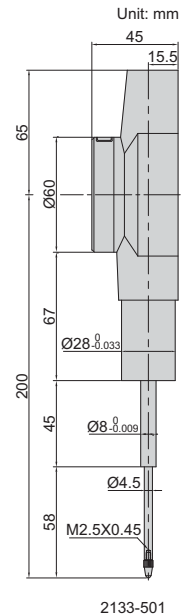
- Linear ball bearings for ten million times use
- Absolutely encoder, the original data remains after power off
- The display flips over when the spindle faces up
- Reading in digital and analog
- Data output
- Button function: data output, tolerance, data preset, data hold, measuring direction change, max./min./TIR, power off time, on/off, mm/inch, analog pointer graduation adjustment, adjust resolution
- Power: rechargeable battery, for 24 hours continuous working
- Optional accessory: data output cable (code 7302-SPC11)



2133-10
2133-101



2133-25
2133-251



2133-501

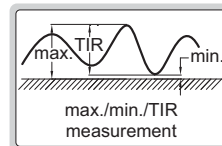
Adjustable resolution: 0.0005mm/0.00001"
0.001mm/0.00001"
0.01mm/0.0001"

Code	Range	Accuracy	Hysteresis	Remark
2133-10*	12.7mm/0.5"	3µm	1.5µm	flat back
2133-25*	25.4mm/1"	3µm	1.5µm	flat back

Adjustable resolution: 0.0002mm/0.00001"
0.001mm/0.00001"
0.01mm/0.0001"

Code	Range	Accuracy	Hysteresis	Remark
2133-101*	12.7mm/0.5"	1.5µm	1µm	flat back
2133-251*	25.4mm/1"	1.8µm	1µm	flat back
2133-501*	50.8mm/2"	3µm	1.5µm	flat back

max./min./TIR



spindle lift knob is included



*Supplied with manufacturer inspection certificate traceable to NIST USA